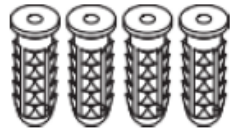
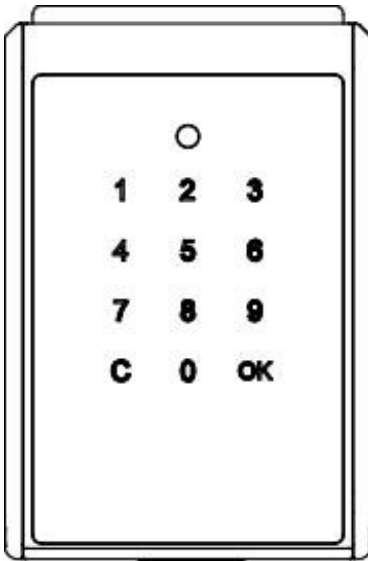


Instruction manual for Electronic Key Storage Box

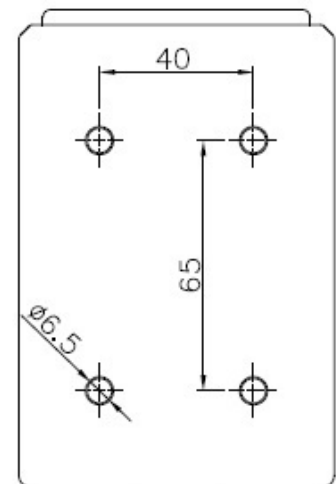
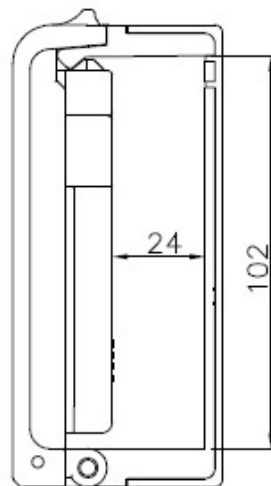
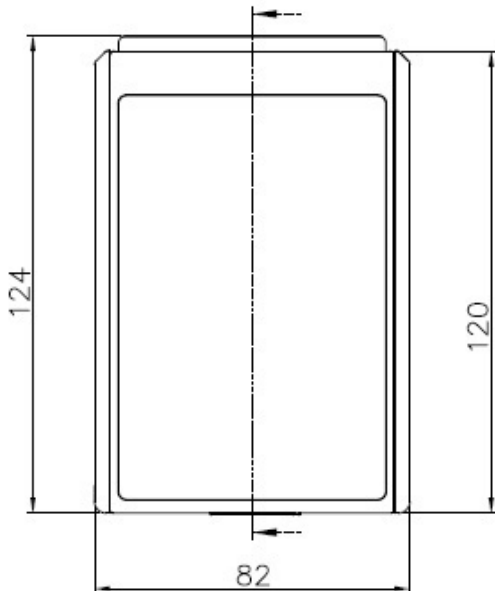
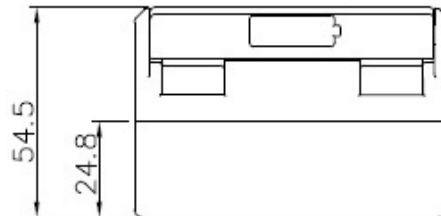
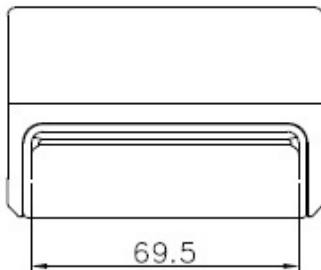


Specifications:

Model:	Electronic key box
Battery Type:	4 x AAA Alkaline batteries (NOT included)
Battery life:	Up to 3.000 openings, depending on the temperature
Emergency Power:	Micro USB-port
Temperature:	- 5C to +55C
IP rating:	IP55
Materiale:	Zamak, Akryl, TPR and ABS.
Weight:	Net: 1,2 kg / Gross: 1,4 kg
Unlock mechanism:	Pass code or App



- 1 Key box
- 4 screw anchors
- 4 mounting screws



ICON EXPLANATIONS



User / guest PIN code.

The key box unlocks with user or guest PIN code by touchpad.



Bluetooth master PIN code.

The key box unlocks with Bluetooth via the app.



Bluetooth user PIN code.

The App can generate and share Bluetooth codes to users.



Bluetooth guest PIN code.

The App can generate and share Bluetooth time limited codes for guests.



Battery life:

The 4 Alkaline batteries can last up to 3.000 cycles.



Low battery indicator:

If the battery is low, a warning beep will sound and the status indicator will show red light after waking up the device. The lock operates as normal immediately following the alert. The lock box can still operate up to 100 cycles in low battery condition.



Emergency jump start if batteries are drained

If battery power is drained use the Micro USB jump-start port on the key box to provide emergency power. When the key box is re-opened replace the drained batteries with 4 new AAA Alkaline batteries.



App history records:

The "SUO" App saves the last 40 openings, which gives you the possibility to see who has open/closed the key box.



Keypad security lockdown:

If entering a wrong PIN code 5 times in a row, an alarm will go off and the key box will be blocked for 3 min.



Auto relock:

The key box relocks automatically when the lid is closed.



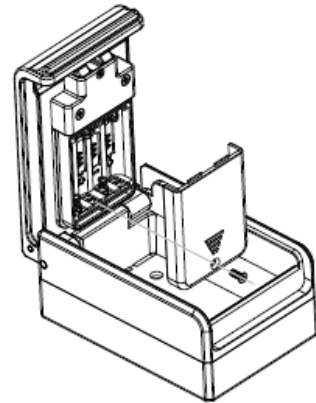
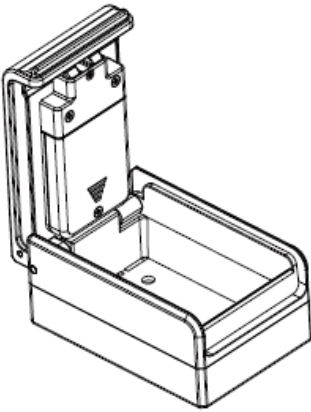
Weather resistant:

The key box is able to withstand weather conditions with protection against dust and water (IP55).

INSTALLATION OF BATTERIES

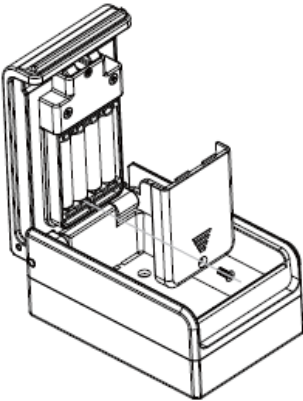
1)

Open the lid on the key box.



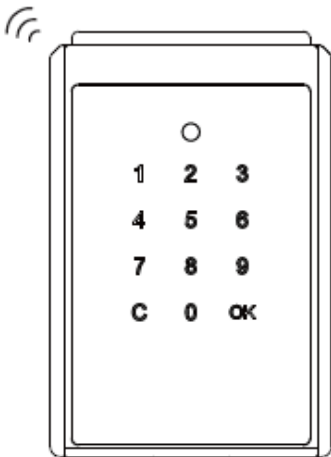
2)

Loosen the fixing screw from the battery lid and remove the battery cover. Install 4 x AAA Alkaline batteries (NOT included).



3)

Secure the battery cover by installing the screw again.

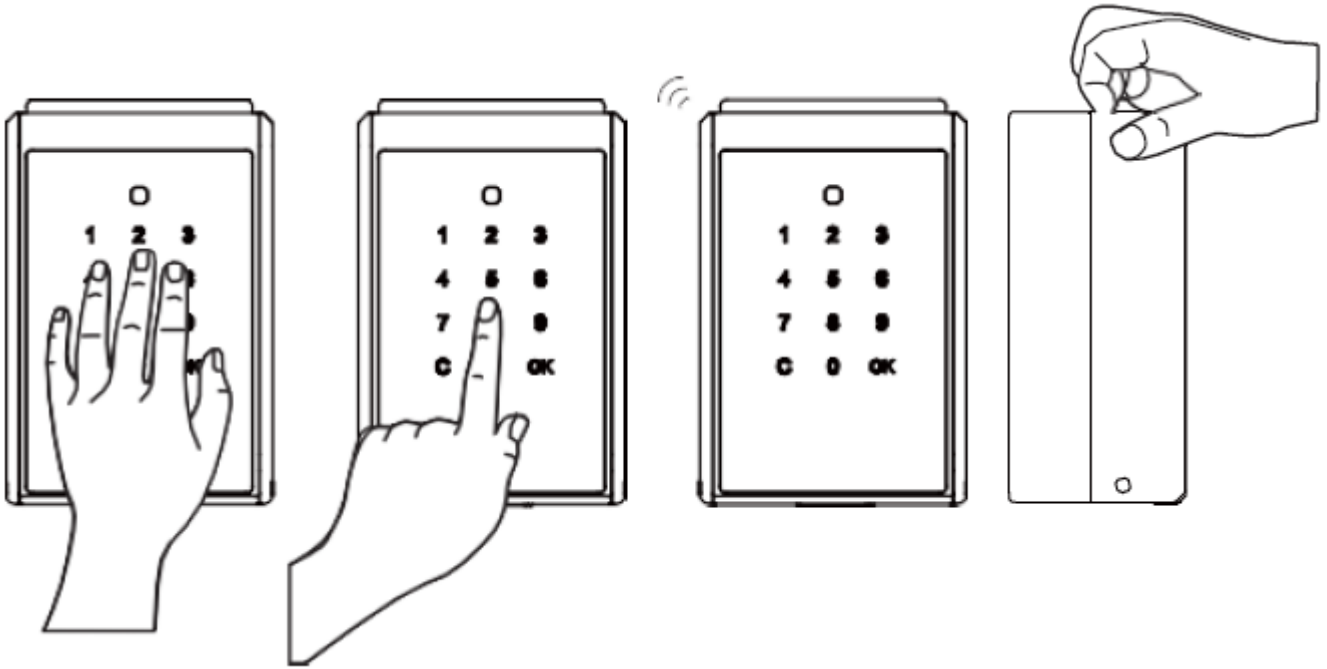


4)

The touch panel lights up and the lock box makes a "beep" sound.

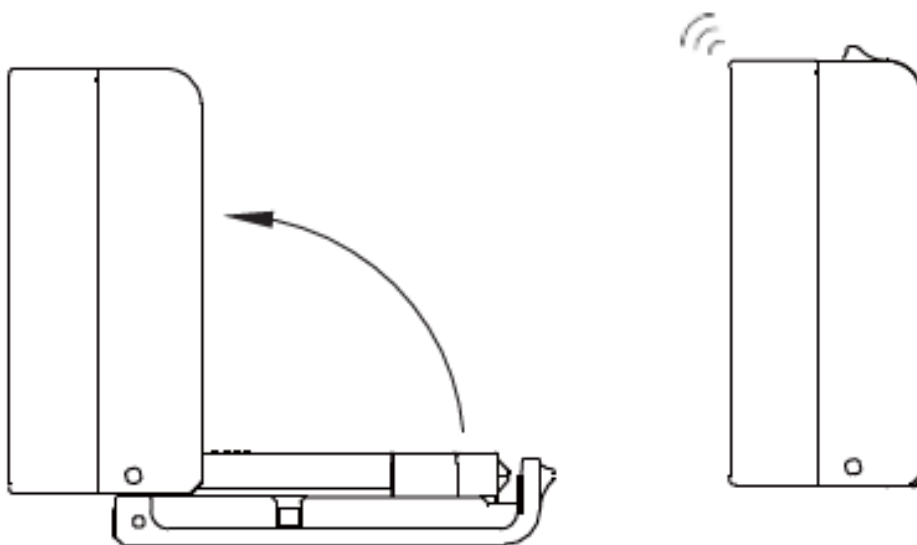
OPEN THE LOCK WITH THE FACTORY CODE

- 1) Put your hand on the touch pad to "wake up" the lock box.
- 2) Enter the factory default code (**011234**).
- 3) The status indicator will light up green once unlocked.



Locking:

- 1) Close the lid and the key box will automatically lock. A long beep will sound.



APP ONBOARDING

1) "SUO" App.

Download the "SUO" App from Apple App Store or from Google Play.

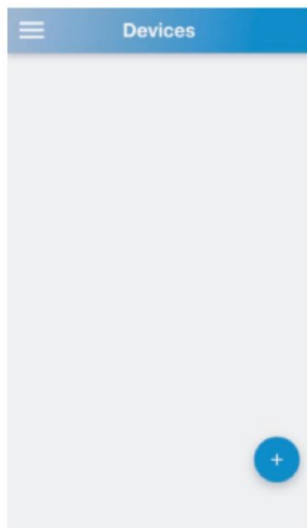
The "SUO" App is compatible with IOS 10 (or later) and Android 4.3 (or later).

Below a short cut for the "SUO" App. Simply scan the below QR-code.

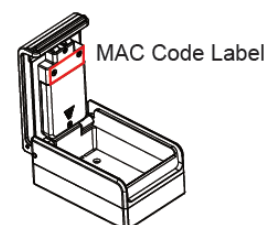
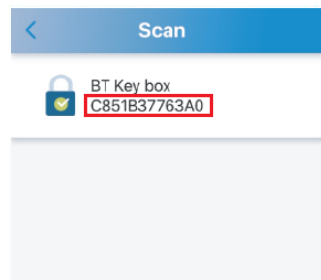


- 2) Switch on the Bluetooth on your mobile device and start the "SUO" App. **IMPORTANT!** On Android devices/phones you **HAVE TO** give the "SUO" App permission to the units location.

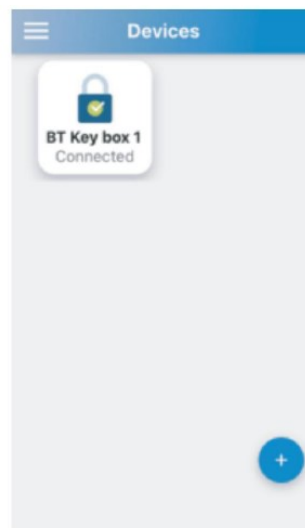
PAIR THE KEY BOX



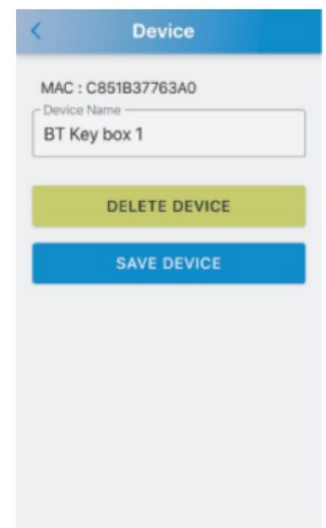
- 1) Click "+" icon to add a key box.



- 2) Please check the MAC-code label on the key box and select the same product ID. (The MAC-code is the product-ID of the key box)

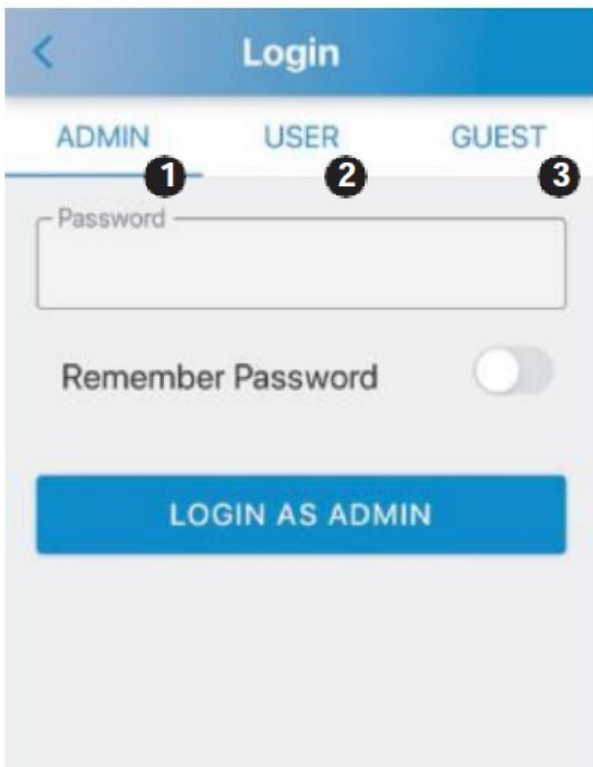


- 3) The box is now paired. Click on the icon for 3 sec to change the key box name. It's good to rename the key box in case you have several key boxes.



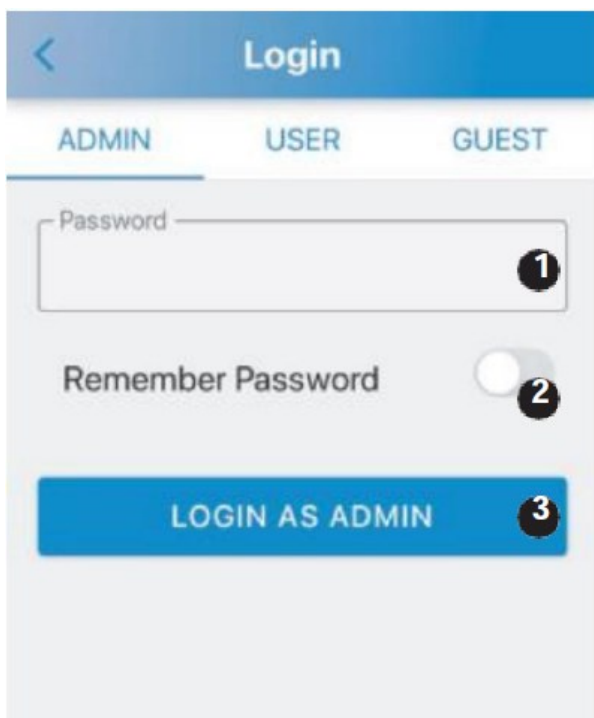
APP FUNCTIONS

Login permission/ Interface functions



- 1) ADMIN:
Here you can set up and manage up to 10 groups of USERS – and 10 groups of GUEST accounts. You can also inquire historical records.
Admin password is 6 digits. Default password is 123456
- 2) USER:
Users have access to the key box without any time limit.
User password is 4-digits. Default password is 1234
- 3) GUEST:
Guests have time limited access to the key box.
Guest password is 4-digits. NO default password.

LOGIN AS ADMINISTRATOR (ADMIN)




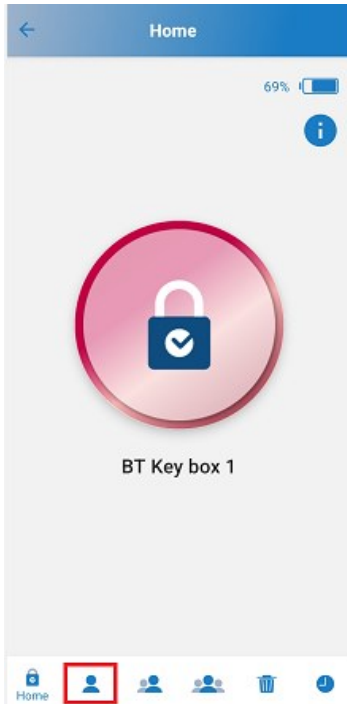
- 1) **Login as administrator (ADMIN):**
Type default admin-code : 1 2 3 4 5 6
- 2) **Save password:**
Click on the button nr. 2 "Remember Password". The button will turn blue and the password is recorded.
- 3) **Login as ADMIN:**
After you have entered the password click on "Login as Admin" 2 times in a row

HOW TO CHANGE THE ADMIN CODE

We always recommend that you change the default admin code to your personal admin code.

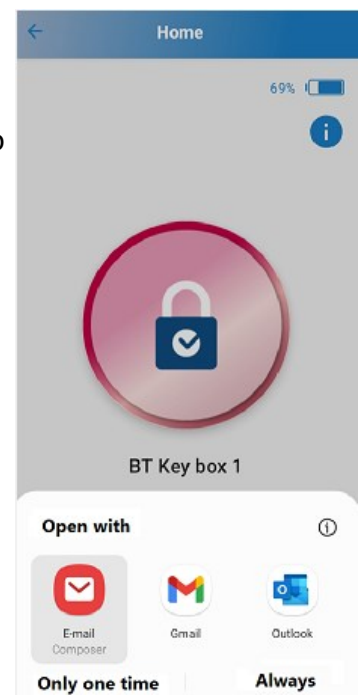
IMPORTANT !!!!!. Your new personal admin code **HAS TO** consist of **6 digits**. No letters or special characters.

- 1) Click on the icon **Admin** 



- 2) Enter your new personal Admin Password. (**Must be 6 digits**) **No letters or special characters.**
- 3) Confirm your new personal Admin Password
- 4) Enter an e-mail address, to where you want to send your new personal Admin Password to.

- 5) Click **2 times** on button "Submit"
- 6) Choose your preferred e-mail App og send e-mail with your new personal password to your own e-mail address.



HOW TO CHANGE THE ADMIN CODE

- 7) Check your e-mail inbox if you have received an e-mail with the new personal admin password.
Remember to save your e-mail a secure place in case you should forget your new password.

To e-mail address of the receiver 

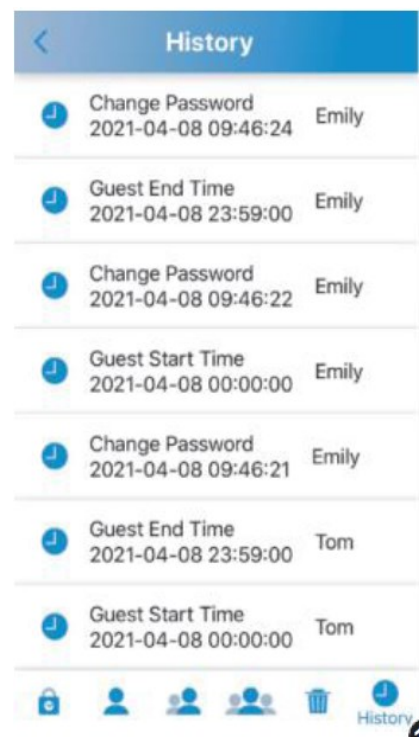
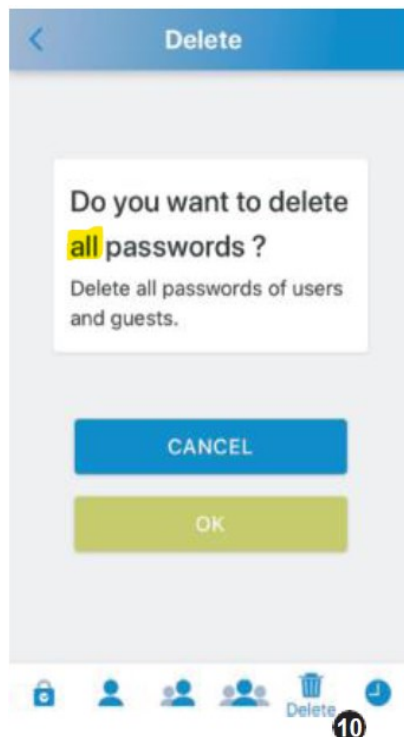
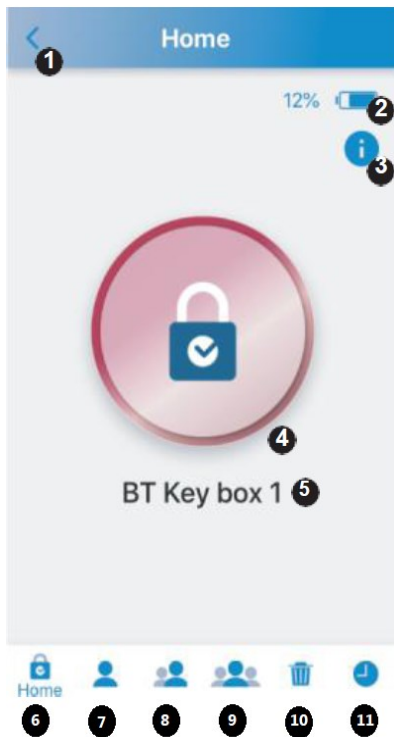
From e-mail address of the sender 

Hi Administrator, this is account information of the key box for you!

To unlock the key box via App.:
ID : admin
Password : **your new password. Ex. 123123**

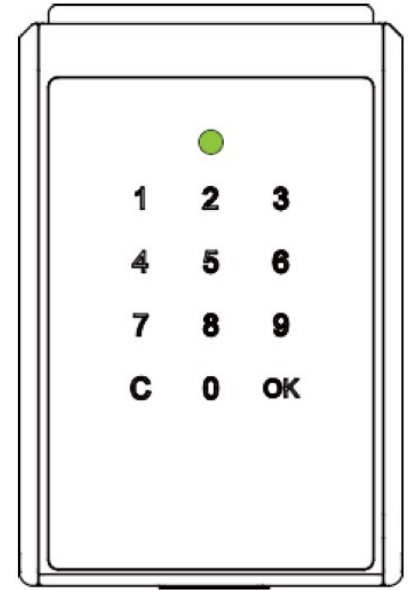
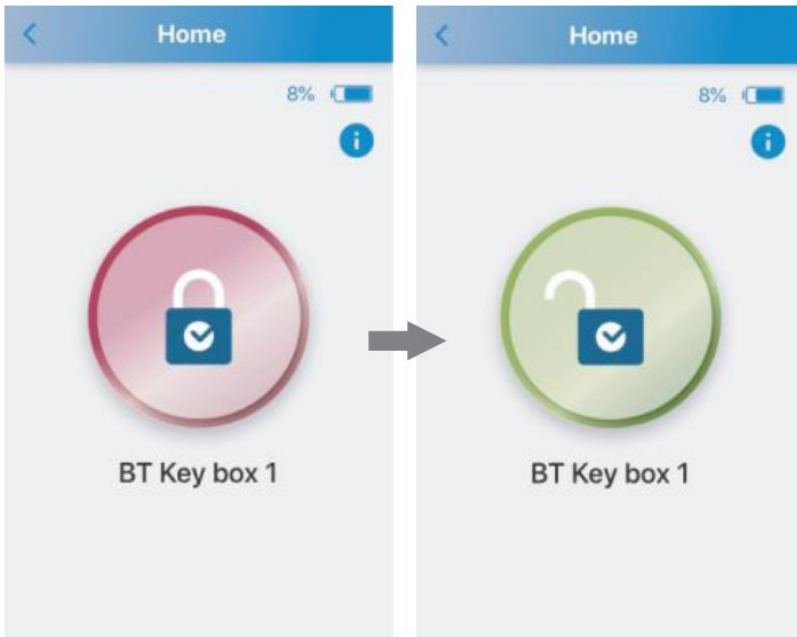
Download "SUO" APP from below link :
APP Store : <https://apple.co/3OPQxsg>
Google Play : <https://bit.ly/suosinox>

INTERFACE FUNCTIONS



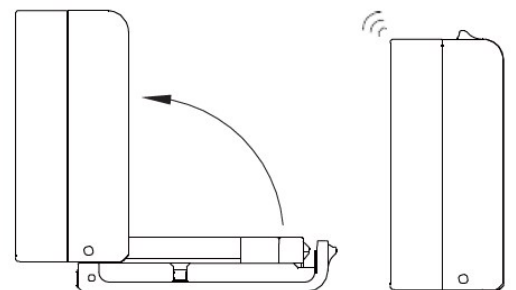
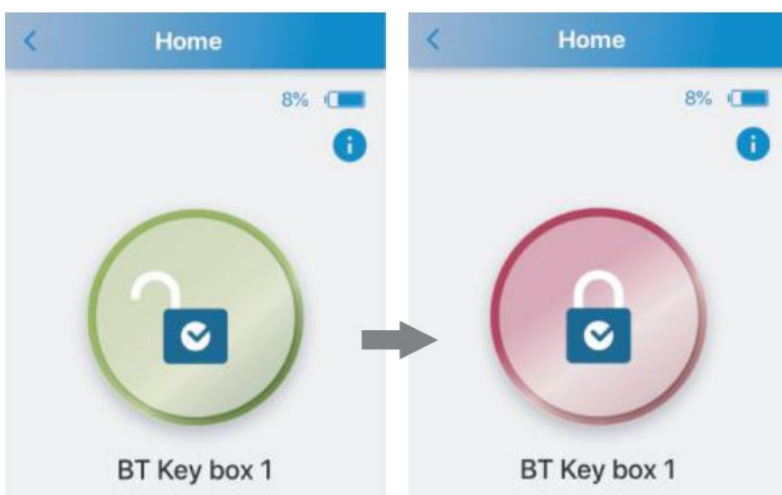
- 1) Return button:
Return to previous page.
- 2) Power indicator:
Shows the key boxes power level.
- 3) Firmware version:
Click to show info about the App generation/version.
- 4) Unlock / Lock button:
Shows the status. Red for locked and green for unlocked.
- 5) Lock name:
Shows the name of the key box. Can be changed.
- 6) Home:
Return back to functions 1 to 5.
- 7) Admin:
Change admin code.
- 8) Users:
You can add or modify the ID's and passwords of up to 10 users.
- 9) Guests:
You can add or modify the ID's and passwords of up to 10 guest with limit access time.
- 10) Delete:
Delete ALL Users and Guest codes at once. Only the admin code will still exist (You cannot delete a user or a guest one by one).
- 11) History:
Records the last 40 operations. The old records will be overwritten one by one.

UNLOCKING VIA APP



- 1) Click on the red button in the App. The icon turns green and the key box is unlocked.
- 2) The status indicator on the key box will light up green once unlocked.

LOCKING OF THE KEY BOX

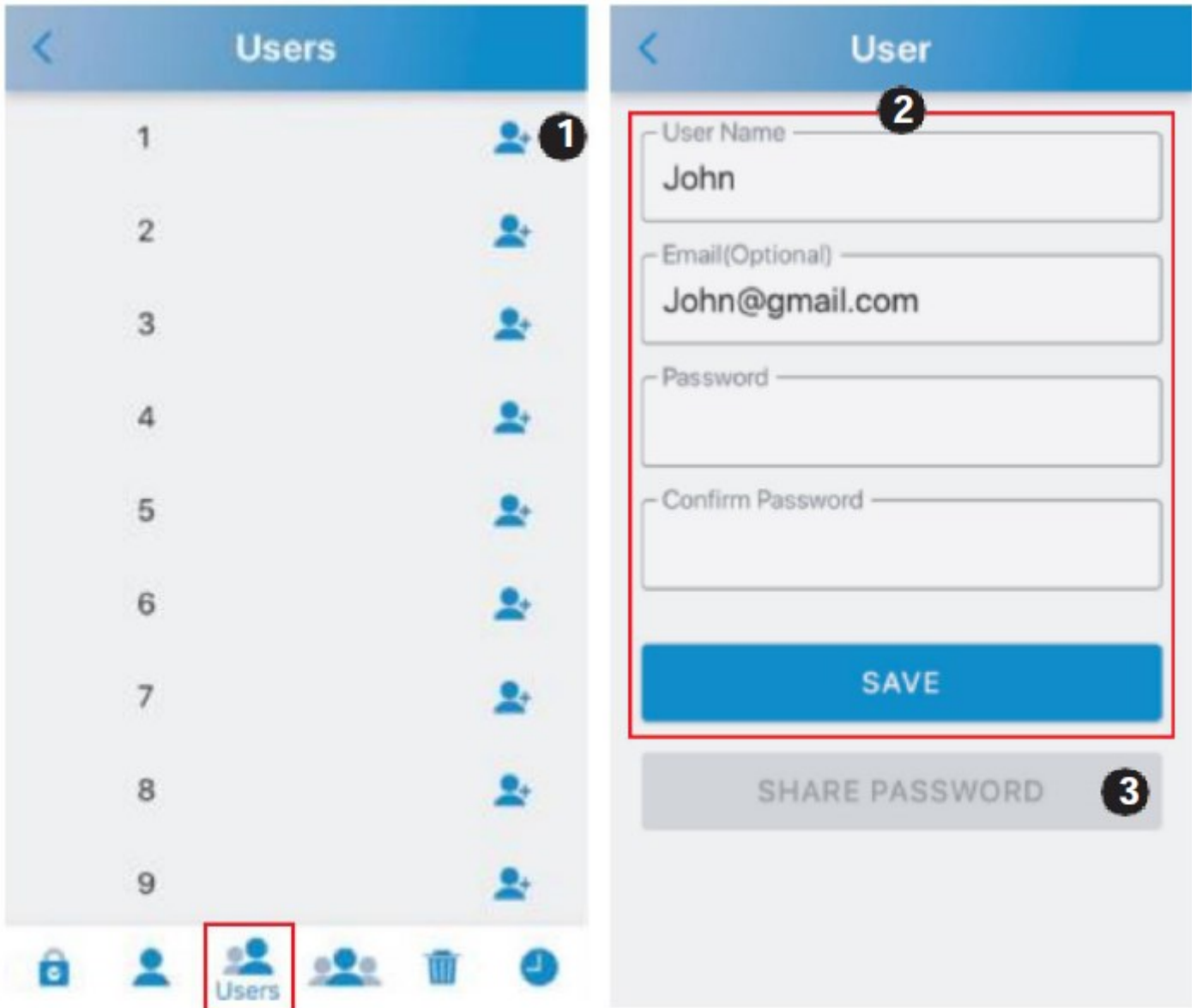


- 1) By use of the App.
If you did not open the key box lid, click the green button to lock. The icon will turn red and the key box is now closed.
- 2) Auto relock.
Close the LID on the key box and it will automatically lock with a long beep.

ADMINISTRATOR "MODE"

HOW TO SETUP USERS

Manage up to 10 user-ID's and passwords. (Default ID. User 1 / Password: 1 2 3 4)

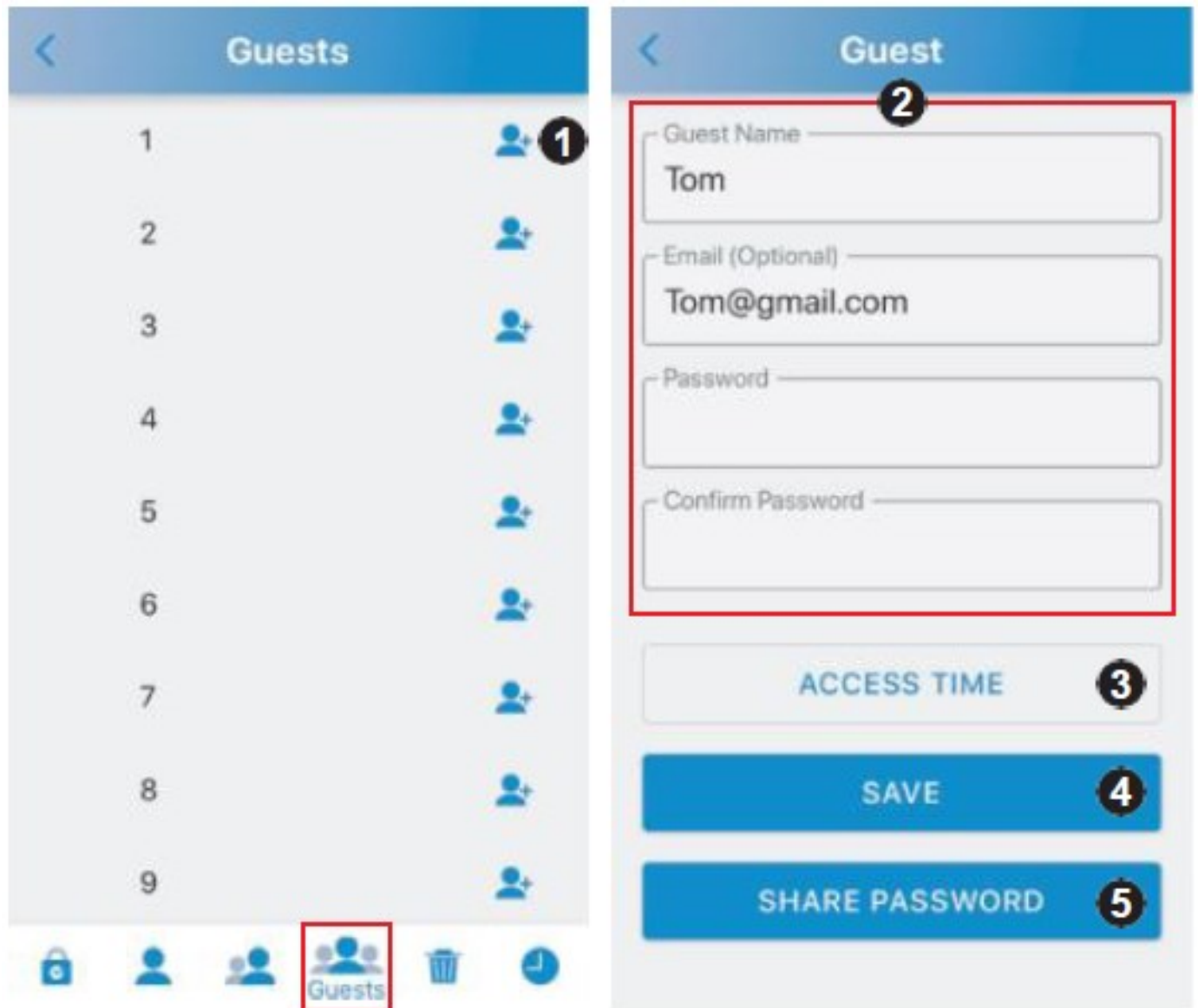


- 1) Click "+" in the end of User 1 to enter setting mode.
- 2) Enter "user name", "e-mail" (optional), "Password" and "Confirm Password" and click "SAVE".
- 3) If you have entered the e-mail address, click "SHARE PASSWORD" to send the an e-mail to the e-mail address.

ADMINISTRATOR "MODE"

HOW TO SETUP GUESTS

Manage up to 10 guest-ID's, passwords and time limit access. (No default code)



- 1) Click "+" in the end of Guest 1 to enter setting mode.
- 2) Enter "user name", "e-mail" (optional), "Password" and "Confirm Password" and click "SAVE".
- 3) Click on "Access time" for setting access time limit.
- 4) Click "Save" for safe the settings
- 5) If you have entered the e-mail address, click "SHARE PASSWORD" to send the an e-mail to the e-mail address.

ADMINISTRATOR "MODE"

SETUP ACCESS TIME FOR GUESTS (SCHEDULE)

Access time

The image displays two screenshots of the 'Schedule' interface. The left screenshot shows the 'SIMPLE' mode, where a date is selected from a calendar (April 8, 2021) and time options are radio buttons. The right screenshot shows the 'DETAILED' mode, where 'From' and 'To' times are selected from a calendar grid.

Simple Mode:

Date
January 6 2018
February 6 2019
March 7 2020
April 8 2021
May 9 2022
June 10 2023
July 11 2024

All Hours
 AM7 ~ PM7
 PM7 ~ AM7

SUBMIT

Detailed Mode:

From
Mon Apr 5 06 57
Tue Apr 6 07 58
Wed Apr 7 08 59
Today 09 00
Fri Apr 9 10 01
Sat Apr 10 11 02
Sun Apr 11 12 03

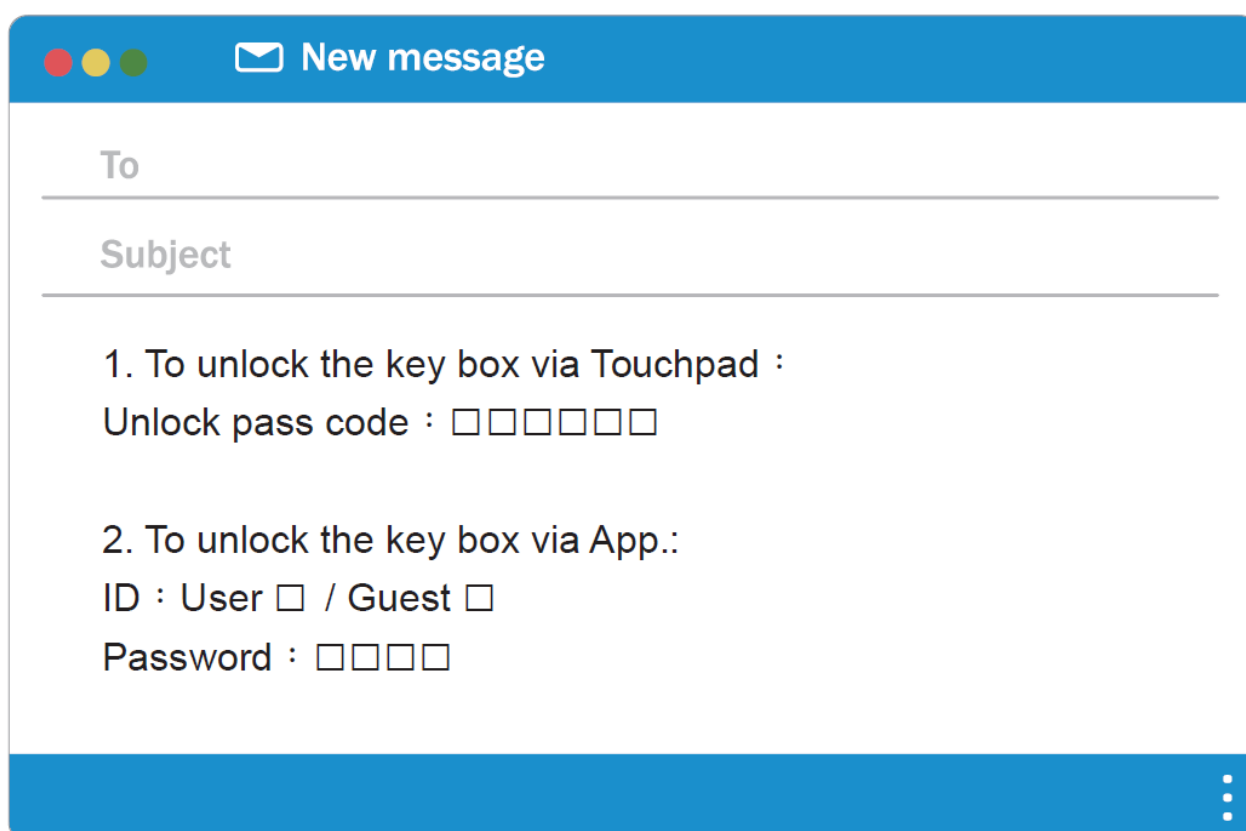
To
Tue Apr 6 11 57
Wed Apr 7 12 58
Today 13 59
Fri Apr 9 14 00
Sat Apr 10 15 01
Sun Apr 11 16 02
Mon Apr 12 17 03

- 1) **Simple:** Choose a date and time period.
- 2) **Detailed:** Set detailed time.

INSTRUCTION MANUAL FOR USERS & GUESTS

You have now received an e-mail like below with a code, so you can logon as an **USER** or as a **GUEST**.

You can choose to logon via the "SUO" **App or Manually** by use of the Touch pad panel on the key box.



New message

To

Subject

1. To unlock the key box via Touchpad :

Unlock pass code :

2. To unlock the key box via App.:

ID : User / Guest

Password :

DOWNLOAD "SUO" APP

1) "SUO" App.

Download the "SUO" App from Apple App Store or from Google Play.

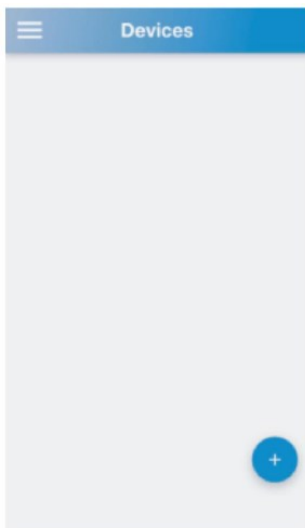
The "SUO" App is compatible with IOS 10 (or later) and Android 4.3 (or later).

Below a short cut for the "SUO" App. Simply scan the below QR-code.

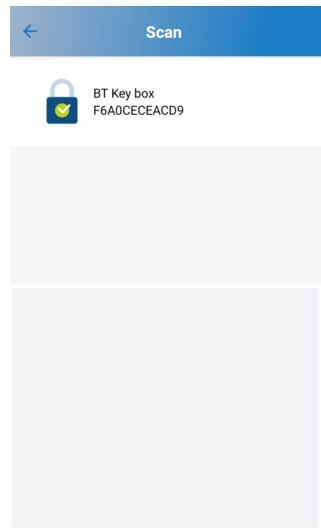


- 2) Switch on the Bluetooth on your mobile device and start the "SUO" App. **IMPORTANT!** On Android devices/phones you **HAVE TO** give the "SUO" App permission to the units location.

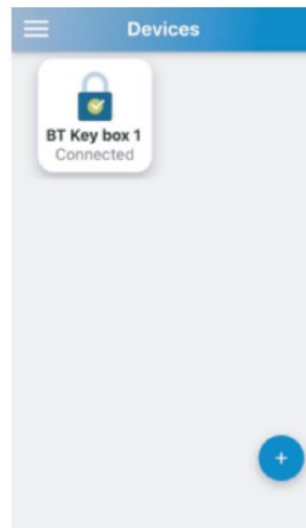
PAIR THE KEY BOX



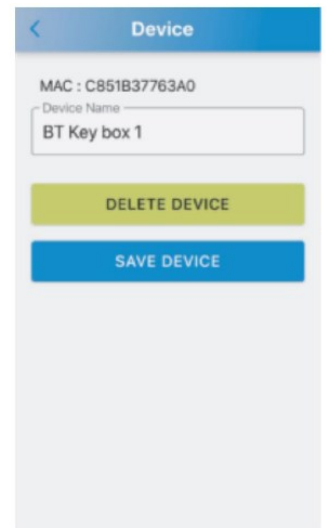
- 1) Click "+" icon to add a key box.



- 2) Click on the unit which appears in the App.

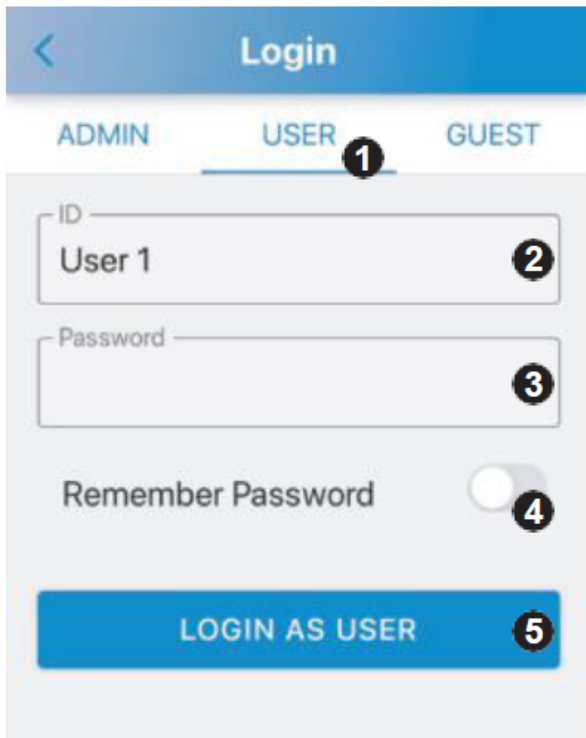


- 3) The box is now paired. Click on the icon for 3 sec to change the key box name. Its good to re-name the key box in case you have several key boxes.



APP MANUAL FOR THE USER

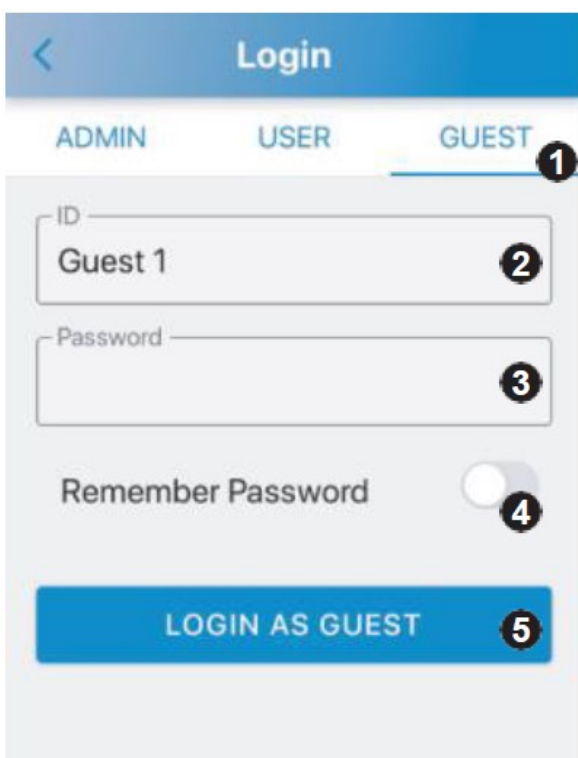
How to login as user



- 1) Click on "User".
- 2) Click on "ID" and choose "User-ID" which you have received by e-mail from the administrator.
- 3) Click on "Password" and enter the 4 digit code which you received by e-mail from the administrator.
- 4) Push the button "Remember password" to the right and the code will be saved.
- 5) When you have entered your password click "Login as User" **2 times in a row**.

APP MANUAL FOR THE GUEST

How to login as guest



- 1) Click on "Guest".
- 2) Click on "ID" and choose "Guest-ID" which you have received by e-mail from the administrator.
- 3) Click on "Password" and enter the 4 digit code which you received by e-mail from the administrator..
- 4) Push the button "Remember password" to the right and the code will be saved.
- 5) When you have entered your password click "Login as Guest" **2 times in a row**.

*Notice that the code is only valid with the access time limit.

INSTRUCTION FOR TOUCH PAD UNLOCKING (NO APP)



Put your hand on the touch pad to "wake up" the lock box.

As User:

- 1) Enter user-ID + User code. (Total 6 digits)
- 2) User-ID 1=01, 2=02.... User 10=10
- 3) Example:
User-ID: User 1 =01; Code 1234
Enter: 011234.

As Guest:

- 1) Enter Guest-ID + Guest code. (Total 6 digits)
- 2) Guest-ID 1=11, 2=12, guest 10=20.
- 3) Example:
Guest-ID: Guest 1 =11; Code 1234
Enter: 111234

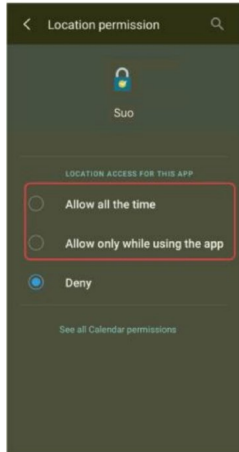
TROUBLE SHOOTING

1) Why can't the App add my device ?

The key box is drained for power. Check if the key box is still working. If not please provide emergency power via the Micro USB jump start port and replace the batteries.

Check if you have turned on your Bluetooth on your mobile device.

Check if you have connected to the correct key box. (Double check the MAC code on the back of the lid)



2) The password is invalid when login as Admin on the App.

-The key box is drained for power. Refer to point 1.

-Typing wrong password. Please check if the password is correct.

-Your mobile device might have run out of RAM. Close recently used Apps to release RAM or restart your mobile device.

-The key box is paired with another mobile device. The key box can ONLY be used with one mobile device at a time. To change user you need to turn off the Bluetooth on the paired mobile device and turn on the Bluetooth on the new mobile device, you wish to use on the key box.

-If you use Android devices/phones check if you have give the "SUO" App permission to the units location.

3) Cannot share the password.

-Check if you have entered the correct e-mail address.

-Check if your phone has internet connection, while sharing the password.

4) The lid on the key box does not lock automatically.

- Click on the small switch on the left side of the lid 5-6 times. Close the lid again to check if the problem has been solved.

MOUNTING INSTRUCTION

- 1) Drill holes in the wall according to below drawing.
- 2) Insert the 4 plastic screw anchors into the holes.
- 3) Touch the display to wake up the lock and open the lid on the key box.
- 4) Fix the key box on the wall by use of the 4 supplied mounting screws.

